


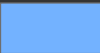

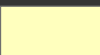



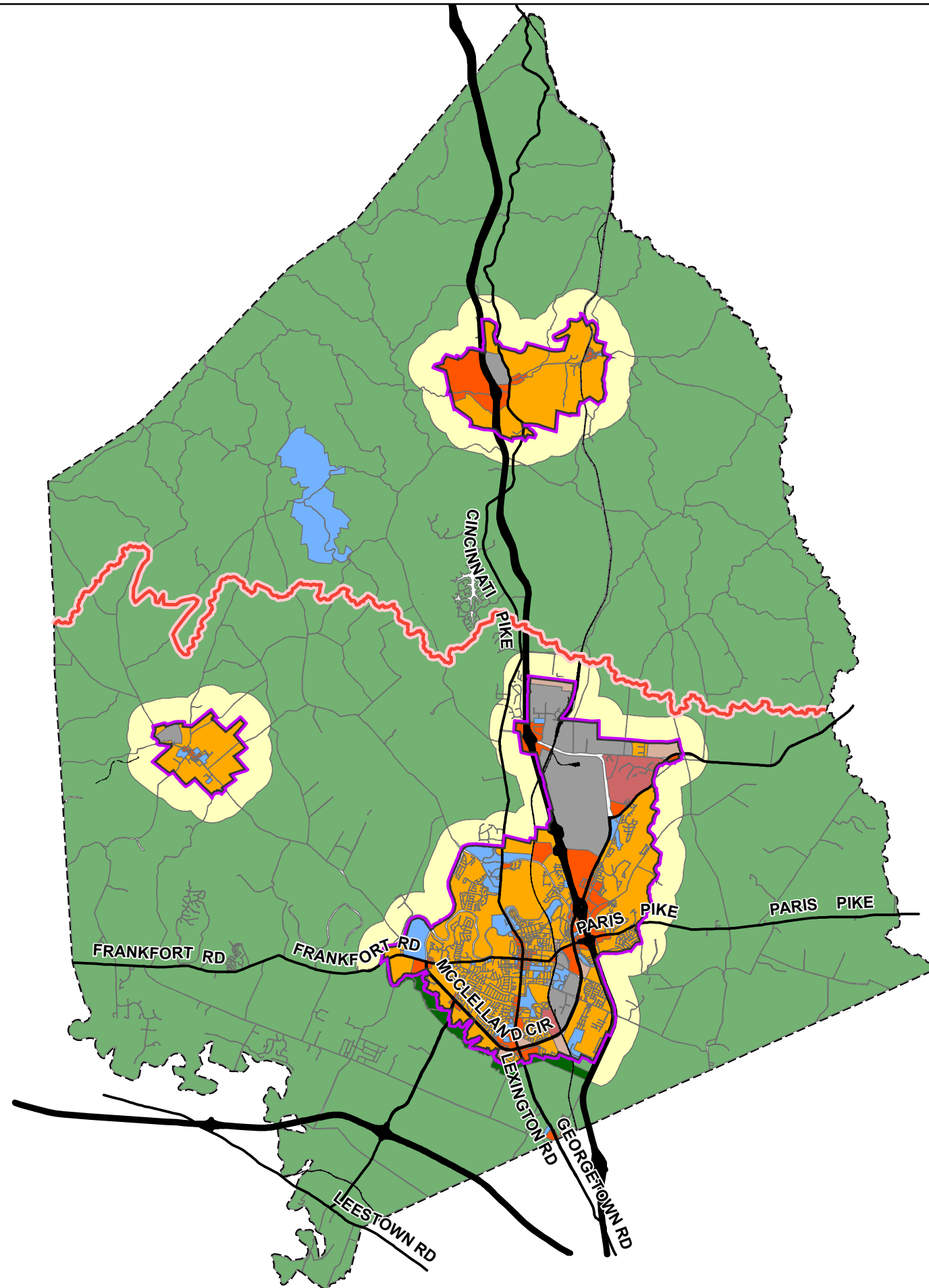


Future Land Use Scott County

Future Land Use Classifications

- | | |
|--|---|
|  Agricultural |  Office |
|  Commerce/BIT |  Quasi-Public |
|  Commercial |  Rural Residential |
|  Greenbelt |  Urban Residential |
|  Industrial | |

-  North-South Dividing Line
-  Urban Service Boundary



GEORGETOWN-SCOTT CO. PLANNING COMMISSION
GEOGRAPHIC INFORMATION SYSTEM MAPPING

COPYRIGHT, LIMITATION OF LIABILITY AND ACCURACY STATEMENT
The following statement is applicable to all map products produced by the Georgetown-Scott County Planning Commission Geographic Information System (GSCPCGIS). All rights reserved.

No part of this map may be reproduced or transmitted in any form or by any means, electronic or mechanical, including photocopying and recording, or by any information storage or retrieval system, except as expressly permitted in writing by GSCPCGIS. LIMITATION OF LIABILITY: GSCPCGIS has no indication or reason to believe that there are any inaccuracies or defects of information incorporated in this work and make NO REPRESENTATIONS OF ANY KIND, INCLUDING, BUT NOT LIMITED TO, THE WARRANTIES OR MERCHANTABILITY OR FITNESS FOR A PARTICULAR USE, NOR ARE ANY SUCH WARRANTIES TO BE IMPLIED, WITH RESPECT TO THE INFORMATION OR DATA, FURNISHED HEREIN. INFORMATION SUPPLIED BY GSCPCGIS SHALL BE CONSIDERED GENERAL INFORMATION AND SHALL IN NO MANNER BE USED IN LIEU OF ACTUAL ENGINEERING OR SURVEY DATA, OR APPLICABLE REGULATIONS AND REQUIREMENTS. APPLICANT FURTHER WARRANTS THAT THE INFORMATION PURCHASED SHALL BE USED EXCLUSIVELY FOR THE PURPOSE FOR WHICH IT WAS CREATED.

* Mapping available in digital or hard copy format in accordance with the adopted fee schedule and standards set out in the Records Request Form.